

Aptio® Utilities



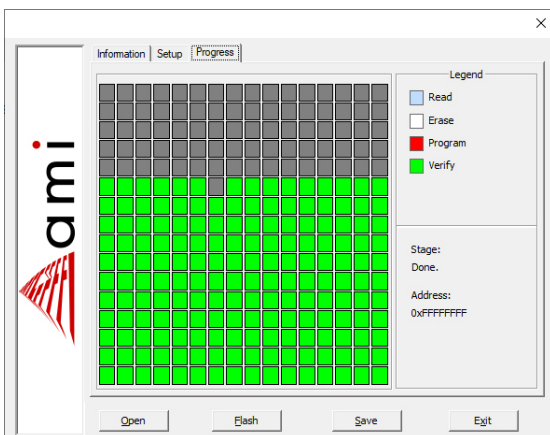
Moving Beyond BIOS

AMI's Aptio® firmware offers an easy transition to the new Unified Extensible Firmware Interface (UEFI) model. With Aptio, OEMs have all the advantages of UEFI - modularity, portability, C-based coding - while retaining easy-to-use tools that facilitate manufacturing and enhance productivity. Aptio offers a rich set of utilities for customizing the BIOS ROM images without rebuilding the firmware, a true advantage in terms of both time and cost.



AMI Firmware Update (AFU)

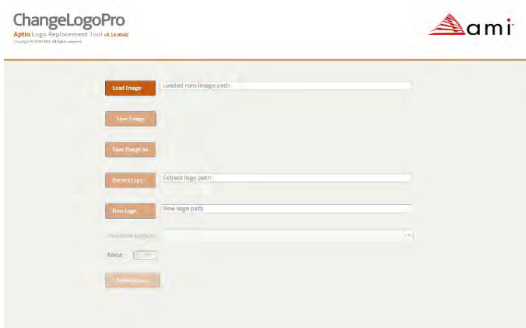
AMI Firmware Update (AFU) is a scriptable command line utility for Microsoft® Windows®, Linux®, FreeBSD® and the UEFI shell. Utilized for factory or field BIOS updates, AFU is flexible enough to update the entire Flash part or only a portion. It programs the main BIOS image, boot block or OEM configurable ROM images. AFU supports x86, x64 and ARM architectures.





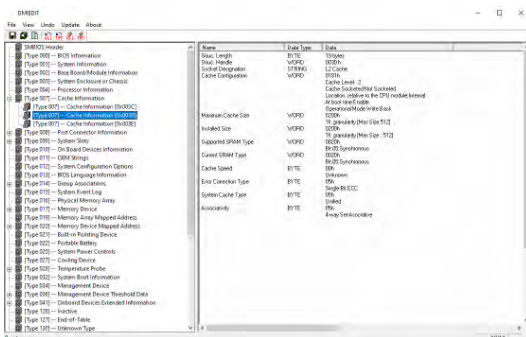
Change Logo

ChangeLogo allows developers to easily change logos displayed by Aptio at boot, via the GUI or CLI. The fullscreen “splash” logo and small logos appearing on the main screen during POST can be replaced with custom logos. ChangeLogo also allows logos to be extracted from existing Aptio ROM images. AMI is able to generate a customized version of the ChangeLogo utility that is locked to a customer’s platform. A locked version of ChangeLogo allows a customer to distribute it directly to their end users. ChangeLogo supports x86, x64 and ARM architectures.



DMI Edit

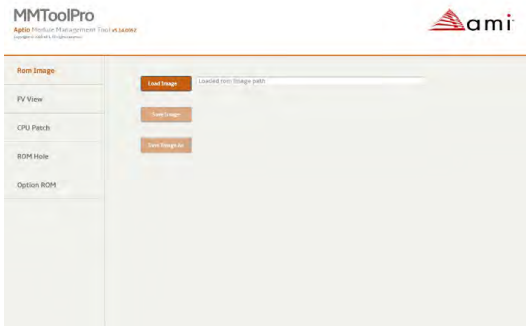
DMIEEdit is a scriptable command line utility for Microsoft® Windows®, Linux® and the UEFI shell. The Desktop Management Interface Editor for Aptio enables customers to modify strings associated with platform SMBIOS tables (System, Base Board, Chassis, OEM string, etc.). In manufacturing, use DMIEEdit to embed platform serial numbers, UUID and license keys into the SMBIOS table, which identifies platforms to management software.





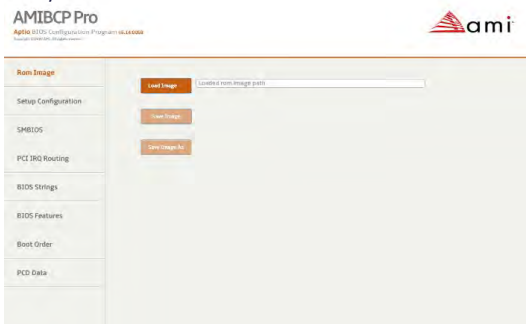
MM Tool

Aptio's Module Management Tool (MMTool) allows developers to manipulate Option ROM images and the UEFI DXE drivers embedded in an Aptio ROM image. Use MMTool to extract, replace and insert these binary components using a graphical or command line interface. AMI is able to generate a customized version of the MMTool utility that is locked to a customer's platform. A locked version of MMTool allows a customer to distribute it directly to their end users. MMTool supports x86, x64 and ARM architectures.



AMI BIOS Configuration Program (AMIBCP)

The AMI BIOS Configuration Program (AMIBCP) for Aptio enables customers to modify parameters in a BIOS ROM image without rebuilding from source. Developers can modify default values for BIOS setup parameters, modify default boot order in BIOS setup, view and edit sign-on and setup strings, and edit SMBIOS string data. AMIBCP also features multi-language string support for added utility. AMI is able to generate a customized version of the AMIBCP utility that is locked to a customer's platform. A locked version of AMIBCP allows a customer to distribute it directly to their end users. AMIBCP supports x86, x64, and Arm® architectures.





AMI Setup Data Extraction (AMISDE)

AMISDE is a command line tool for exporting setup data from an Aptio ROM image, including spreadsheet applications such as Microsoft® Excel®. It generates a helpful summary report of BIOS setup parameters and default values that enhances productivity in testing and manufacturing.

```

C:\Users\BiosTest\amisde /s RMI.csp /o mybios.txt

| AMISDE v.XX.XXXX |
| Copyright (c)2018 AMI |

Report mybios.txt generated successfully.
C:\Users\BiosTest>

```



AMISLP

AMISLP allows the insertion of Microsoft System Locked Pre-Installation (SLP) key files into the BIOS image. SLP keys are used for OEM activation of Microsoft Windows® 7 and Vista. For Windows® 8, the OEM Activation 3.0 eModule is used in conjunction with AFU v2.35 or greater.

```

C:\Users\BiosTest\amislp /s RMI.csp

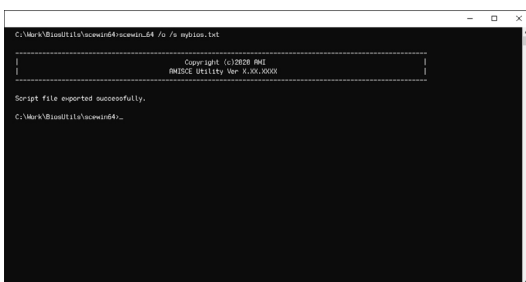
| AMISLP v.XX.XXXX |
| Copyright (c)2018 AMI |

OEM ID = MY OEM
OEM TABLE ID = MYOEMID
C:\Users\BiosTest>

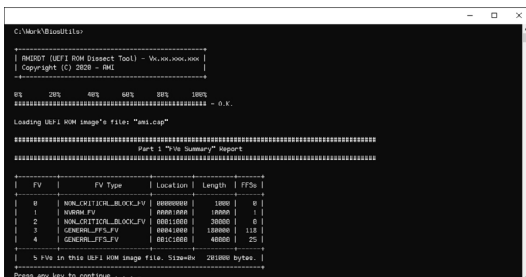
```



AMISCE is a command line tool which provides an easy way to update NVRAM variables. The user can then modify the script file and use it as input to change the current NVRAM setup variables. Extract variables directly from the BIOS with AMISCE, and change settings using either a text editor or a setup program, and then update the BIOS. AMISCE produces a script file that lists all setup questions on the system where AMISCE is running. AMI can generate a customized version of the AMISCE utility that is locked to specific platforms. AMISCE supports x86, x64 and ARM architectures.



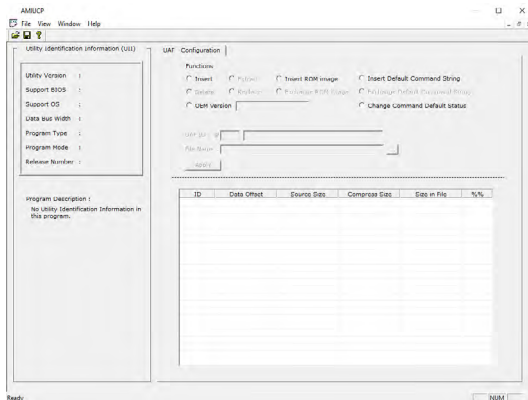
The AMIRDT utility makes it easy for developers to dissect a UEFI ROM and produce related reports on ROM image content and size. This powerful tool can dissect ROM images down to section level, dissect NVRAM variables, compare two ROM images and search the GUIDs of a given FFS to provide a summary of their sizes from ROM images.





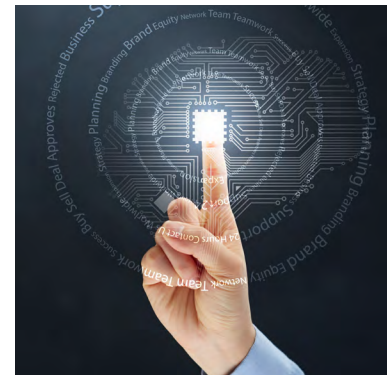
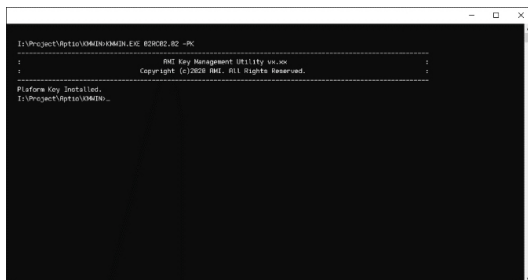
AMI Utility Configuration Program (AMIUCP)

AMIUCP is used to pre-configure the Aptio Flash Utility (AFU). Insert and exchange the default command string and ROM image used in AFU to create a customized version of the utility.



AMI Key Management (AMIKM)

The AMIKM utility program can write PK, KEK and signature database information to the target system.



Windows®, Microsoft® and Excel® are registered trademarks of Microsoft Corporation or its subsidiaries. Linux® is the registered trademark of Linus Torvalds in the U.S. and other countries. FreeBSD® is a registered trademark of The FreeBSD Foundation. Arm® is a registered trademark of Arm Limited.

For more information please visit: ami.com/contact

Copyright ©2022 AMI. All rights reserved. Product specifications are subject to change without notice. Products mentioned herein may be trademarks or registered trademarks of their respective companies. No warranties are made, either expressed or implied, with regard to the contents of this work, its merchantability or fitness for a particular use. This publication contains proprietary information and is protected by copyright. AMI reserves the right to update, change and/or modify this product at any time.